

Find Rooms drawing tool

Learn how to use the Find Rooms drawing tool in FloorRight
Commercial

By: Mical Santiago



Overview:

The Room Finder drawing tool was released in FloorRight 11.0 in November 2018. The Room Finder is limited to non-angled walls. If the FloorRight user has an imported Floorplan with rectangular rooms or rooms with perpendicular corners the Find Rooms tool is a quick way to draw the rooms.

Steps:

Step 1: Open FloorRight.

Step 2: Import a PDF floor plan.
File/Import/Floor Plan.

Step 3: Set the scale of the floor plan.

Step 4: To turn on the Find Rooms tool use one of the two methods below:

1) Click on Tools/Find Rooms.

2) Click the Find Rooms wand icon on the toolbar.



Step 5: Left click onetime on the floor plan with the Find Rooms tool to draw a room.


Step 6: Left click and drag on the floor plan to fill the room with material.

Note: The user can left click near the door if the Find Rooms tool skips the doorway first try.


Step 7: Draw two rooms and join them with the Find Rooms tool by left clicking and dragging from one room to the other.

Note: Instead of drawing into the doorways use the door tools to add a transition and drop the material into the doorway.

Step 8: Draw a room by left clicking with the Find Rooms tool and draw and circle.

Note: If the room is at an angle use the “Set Draw Angle” tool  to tell FloorRight what degree/angle to draw the rooms. After setting the correct angle with the “Set Draw Angle” tool then use the Find Rooms tool to draw the room.

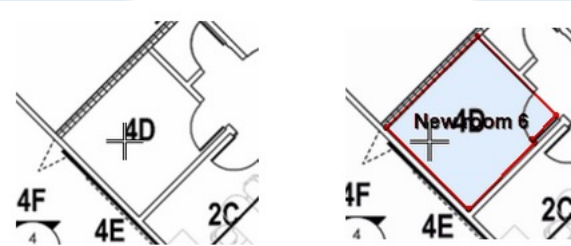
Threshold Adjuster:

Check the contrast of the walls on the floor plan. If some walls appear to faint use the “Adjust Threshold” on the toolbar . Move the slider to the right to increase the thickness of the walls. Move the slider to the left to fade out unnecessary lines on the floor plan. To return to drawing rooms with the Find Rooms tool and leave configuration mode click the “Configure” icon when finished to keep the settings.

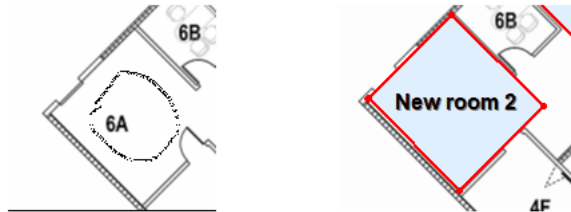


Here are some ways to draw a room using the Find Rooms tool.

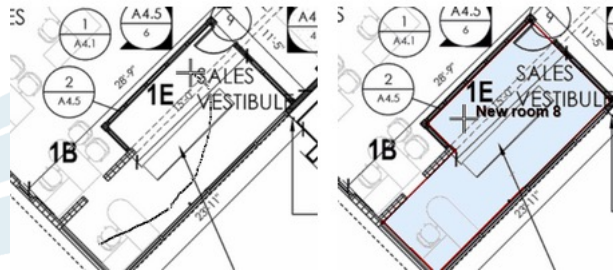
1) Left click inside the room



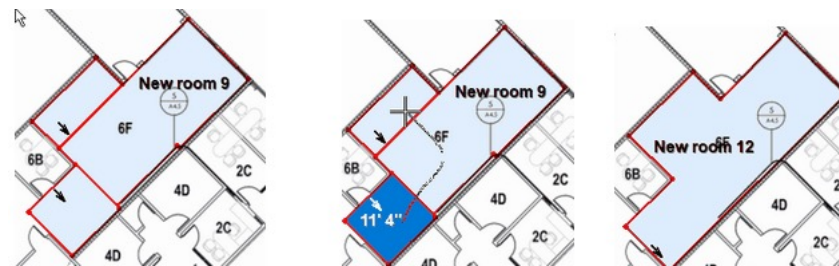
2) Draw a circle in a room.



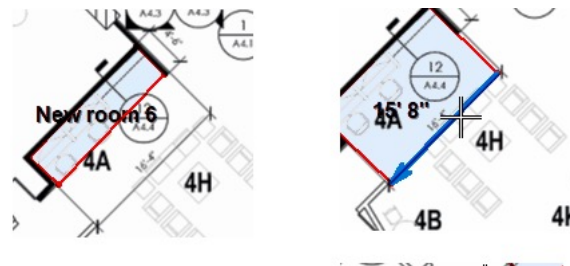
3) For L shaped rooms draw a line that follows that shape.



4) Or draw multiple rooms inside the room and then left click and drag using the Find Rooms tool to join the individual rooms into one.



5) Left click the edge of a material and drag it using the Find Rooms tool if the material doesn't reach the wall.





END.