

# Product Catalog Maintenance

PS Import and Product Catalog Pricing Update

Robin Biffath

# Product Catalog



Evaluate



Eliminate



Invigorate

# Product Catalog

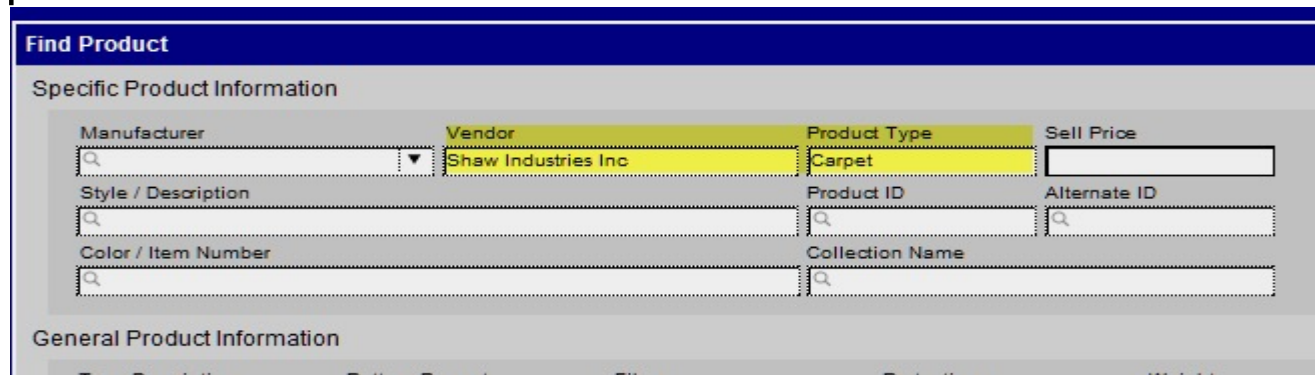


There are multiple manners to process Pricing changes and adding new products.

- B2B, Gateway and Abby downloads and of course good old fashioned Excel import.
- A clean Product catalog helps with speed of Estimate creation no need to call on every product to verify costs which helps with the accuracy of budget costs on the estimates.

# Product Catalog: Evaluation

- The first place to start is the existing Product catalog.
- Create a Found set of the particular vendor/Product Type being processed.



The screenshot shows a 'Find Product' form with the following fields and values:

Specific Product Information			
Manufacturer	Vendor	Product Type	Sell Price
<input type="text"/>	Shaw Industries Inc	Carpet	<input type="text"/>
Style / Description		Product ID	Alternate ID
<input type="text"/>		<input type="text"/>	<input type="text"/>
Color / Item Number		Collection Name	
<input type="text"/>		<input type="text"/>	
General Product Information			
Type Description	Pattern Repeat	Fiber	Protection
			Weight

- This isolates a group of products to review, we are looking for Duplicates, Differences in case (ie upper and lower) and not complete Style information.

# Product Catalog: Evaluation



## Steps

- Sort by Style to review.
- Once this has been reviewed click into the set to spot check colors too.
- If there are too many issues; the best resolution will be to archive the current set and start with fresh catalog imports.

## Review

General List		Private List					
Product	Manufacturer	Style	Width	Length	Sell	Unit	Buyin
Q Adhesive	Armstrong	S - 553 seam seal er			\$26.22	SY	
Q Adhesive	Armstrong	S-200-431 Securabond Seam			\$79.05	EA	
Q Adhesive	Armstrong	S199 - 408 Embossing Leveler			\$94.12	EA	
Q Adhesive	Armstrong	S235 -408 Multipurpose Full Spread			\$17.58	EA	
Q Adhesive	Armstrong	S235 - 418 Multipurpose Full Spread			\$80.00	EA	
Q Adhesive	Armstrong	S235-124 Multipurpose Full Spread			\$8.75	EA	
Q Adhesive	Armstrong	S254 - 408 Multipurpose Full Spread			\$16.28	EA	
Q Adhesive	Armstrong	S254 - 418 Multipurpose Full Spread			\$53.40	EA	
Q Adhesive	Armstrong	S553 Seam Sealer			\$18.18	EA	

# Product Catalog: Evaluation



It is best to start with a solid place if the current catalog is not at a place to update



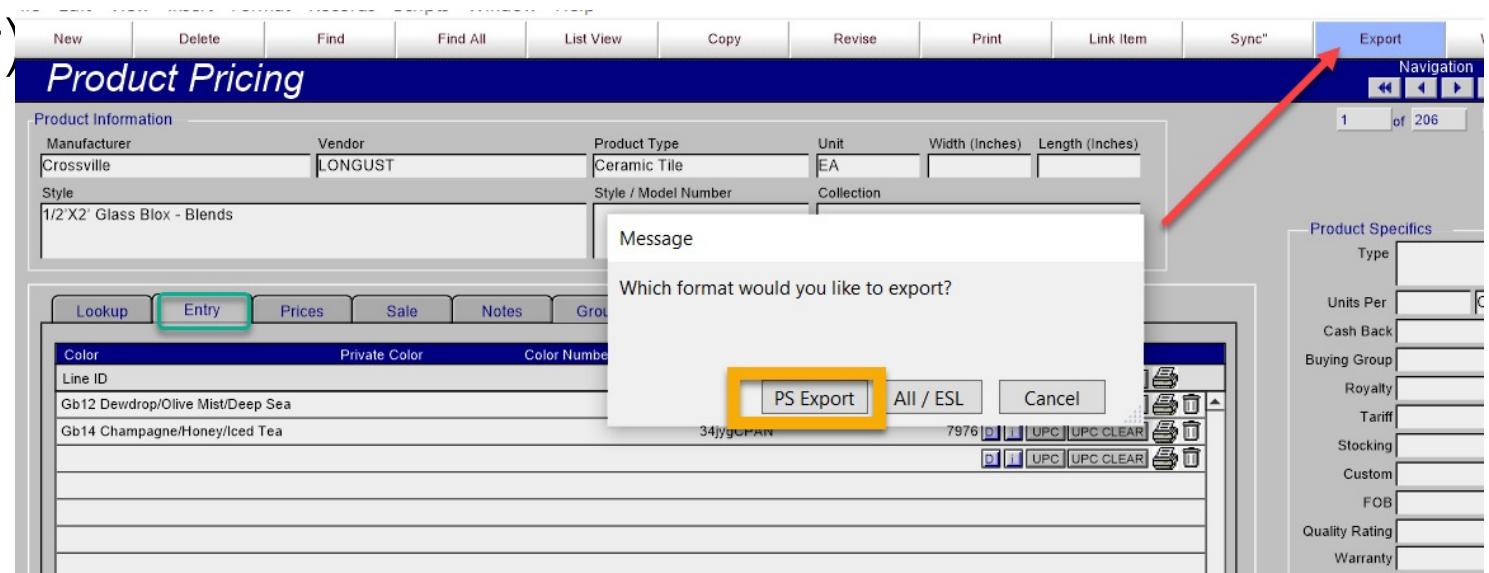
Archiving may be the easiest option.

# Product Catalog: Eliminate



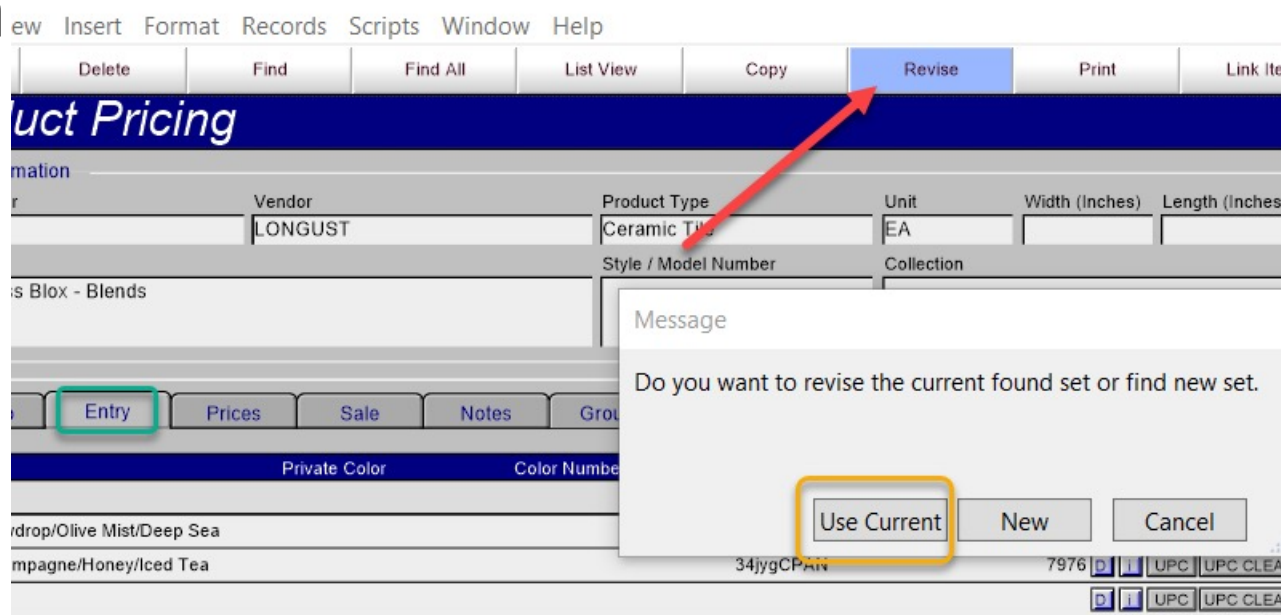
To Archive Start by exporting the current set

- Entry tab
- Export
- Use Found Set
- PS Export(used later)



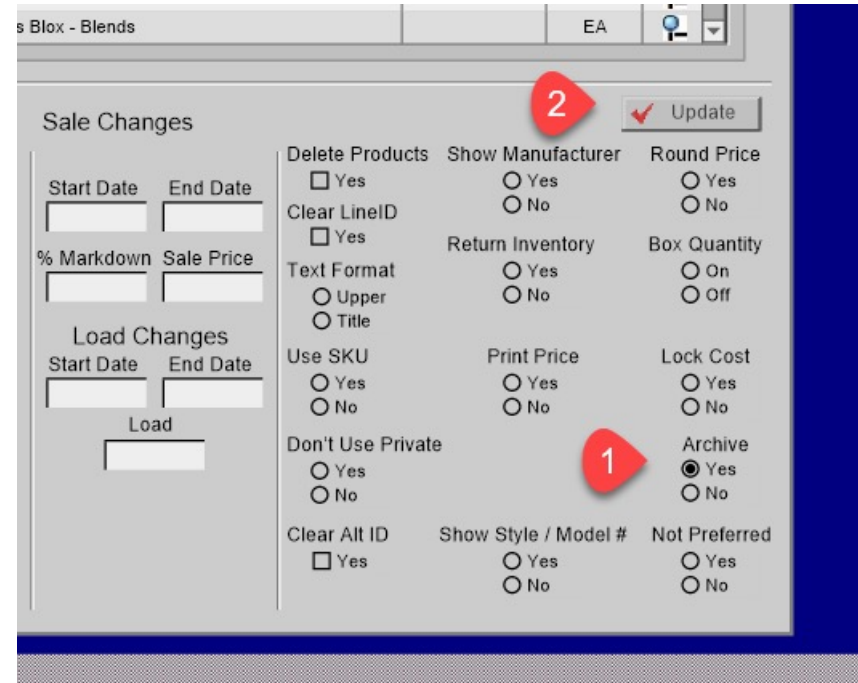
# Product Catalog: Eliminate

- Use the Same Search if you are not still on the set
- Click on the Entry Tab
- Then the Revise Button
- Use Current



# Product Catalog: Eliminate

- Mark the Archive
- Then Update



Sales Blox - Blends EA

**Sale Changes** Update

Start Date	End Date	Delete Products	Show Manufacturer	Round Price
<input type="text"/>	<input type="text"/>	<input type="checkbox"/> Yes	<input type="radio"/> Yes	<input type="radio"/> Yes
% Markdown	Sale Price	Clear LineID	<input type="radio"/> No	<input type="radio"/> No
<input type="text"/>	<input type="text"/>	<input type="checkbox"/> Yes	Return Inventory	Box Quantity
Load Changes		Text Format	<input type="radio"/> Yes	<input type="radio"/> On
Start Date	End Date	<input type="radio"/> Upper	<input type="radio"/> No	<input type="radio"/> Off
<input type="text"/>	<input type="text"/>	<input type="radio"/> Title	Use SKU	Lock Cost
Load		Use SKU	<input type="radio"/> Yes	<input type="radio"/> Yes
<input type="text"/>		<input type="radio"/> No	Print Price	<input type="radio"/> No
		Don't Use Private	<input type="radio"/> No	Archive
		<input type="radio"/> Yes		<input checked="" type="radio"/> Yes
		<input type="radio"/> No		<input type="radio"/> No
		Clear Alt ID	Show Style / Model #	Not Preferred
		<input type="checkbox"/> Yes	<input type="radio"/> Yes	<input type="radio"/> Yes
			<input type="radio"/> No	<input type="radio"/> No

# Product Catalog: Eliminate

- Find the Same Set
- ADD the include Archives Box

Specific Product Information

Manufacturer [?]	Vendor LONGUST	Product Type Carpet	Sell Price [?]
Style / Description [?]	Product ID [?]	Alternate ID [?]	
Color / Item Number [?]	Style / Model Number [?]	Collection [?]	

General Product Information

Type Description [?]	Pattern Repeat [?]	Fiber [?]	Protection [?]	Weight [?]
Backing [?]	Cash Back [?]	Buying Group [?]	Sample Location [?]	Gauge [?]
Stocking [?]	Tariff [?]	Royalty [?]	Modification Date / Time [?]	FOB [?]
Source [?]	Quality [?]	Specifications [?]	Width [?]	Length [?]
Notes [?]	SKU [?]	Kit Name [?]	Audit Text [?]	

Product Setup Information

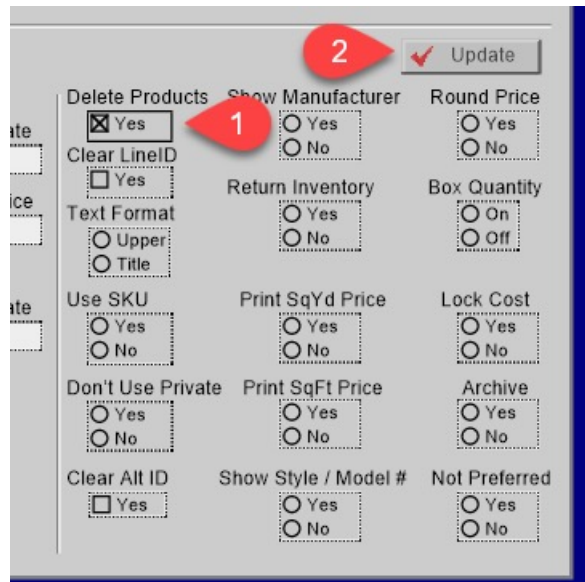
Non-Taxed <input type="checkbox"/>	Show Manufacturer <input type="checkbox"/>	Print Sell <input type="checkbox"/>	Kit Modified <input type="checkbox"/>	Not Preferred <input type="checkbox"/>
Return Inventory <input type="checkbox"/>	No Inventory Req <input type="checkbox"/>	Use Box Quantity <input type="checkbox"/>	Kit present <input type="radio"/> Yes <input type="radio"/> No	Available From Other Source <input type="checkbox"/>
Disable Discount <input type="checkbox"/>	Discontinue Line <input type="checkbox"/>	Lock Cost <input type="checkbox"/>	Usage Style? <input type="radio"/> Yes <input type="radio"/> No	Show Style / Model # <input type="checkbox"/>
On Sale <input type="checkbox"/>	Don't Include <input type="checkbox"/>	Archive <input checked="" type="checkbox"/>	Has Supplementary Products <input type="checkbox"/>	Cost Filter <input type="radio"/> High <input type="radio"/> Low
Future Price <input type="checkbox"/>	Duplicate Colors <input type="checkbox"/>	Multiple Prices <input type="checkbox"/>	Products with an Image <input type="checkbox"/>	

Cancel [?] Find

# Product Catalog: Eliminate

- Click on the Entry Tab
- Then the Revise Button
- Use Current
  - First delete what can be

Then Clear the Alt ID



Update

Delete Products  Yes  No

Show Manufacturer  Yes  No

Round Price  Yes  No

Clear LineID  Yes

Return Inventory  Yes  No

Box Quantity  On  Off

Text Format  Upper  Title

Use SKU  Yes  No

Print SqYd Price  Yes  No

Lock Cost  Yes  No

Don't Use Private  Yes  No

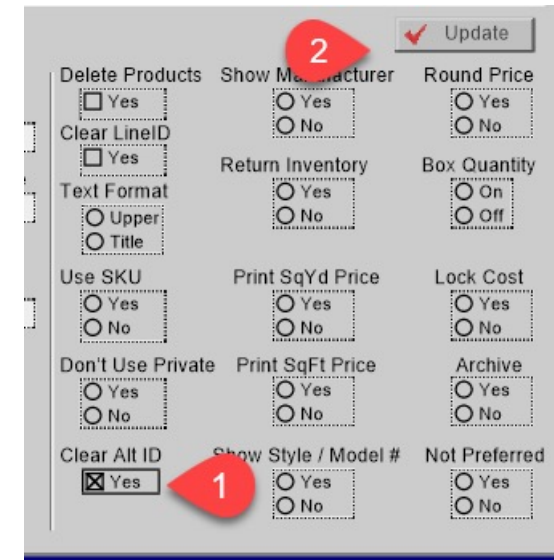
Print SqFt Price  Yes  No

Archive  Yes  No

Clear Alt ID  Yes

Show Style / Model #  Yes  No

Not Preferred  Yes  No



Update

Delete Products  Yes  No

Show Manufacturer  Yes  No

Round Price  Yes  No

Clear LineID  Yes

Return Inventory  Yes  No

Box Quantity  On  Off

Text Format  Upper  Title

Use SKU  Yes  No

Print SqYd Price  Yes  No

Lock Cost  Yes  No

Don't Use Private  Yes  No

Print SqFt Price  Yes  No

Archive  Yes  No

Clear Alt ID  Yes

Show Style / Model #  Yes  No

Not Preferred  Yes  No

# Product Catalog: Invigorate

- The Catalog is now ready for a fresh start
- Open the Excel that was exported(it is on your desktop)
  - It is in a specific format that the system requires(we will look at a live

	A	B	C	D	E	F	G	H	I	J
1	Vendor	Manufacturer	Product Type	Type	Collection	Original St	Original Style Number	Original Color Name	Original Cc	Private
2	LONSEAL	Lonseal Inc	Accessories			2" X 60' Double Faced Tape				
3								2 1/2" X 60'		
4								2 1/2" X 75'		
5	LONSEAL	Lonseal Inc	Accessories			Plain - Welding Rod (500 Lf)				
6								31 To Match Concrete		
7								35 To Match Night		
8								To Match #7096 Pumpkin Pie		
9								To Match #7216 Mint		
10								To Match #7219 Mica		
11	LONSEAL	Lonseal Inc	Accessories	500 lf rolls (4.0mm)		Vinyl Welding Thread (For Loncourt I)				
12								Zt12 Maple		
13								Zt38 Buckwheat		
14	LONSEAL	Lonseal Inc	Adhesive			#300 Epoxy Adhesive				
15								Adhesive 1 Gal		
16	LONSEAL	Lonseal Inc	Adhesive			#555a Sheet Vinyl Adhesive				
17								3 Gallon		
18								1 Gallon - 200 Feet Per Gallon		
19	LONSEAL	Lonseal Inc	Adhesive			755 Premium Bond Sheet Vinyl				
20								3.5 Gallon		

# Product Catalog: Invigorate



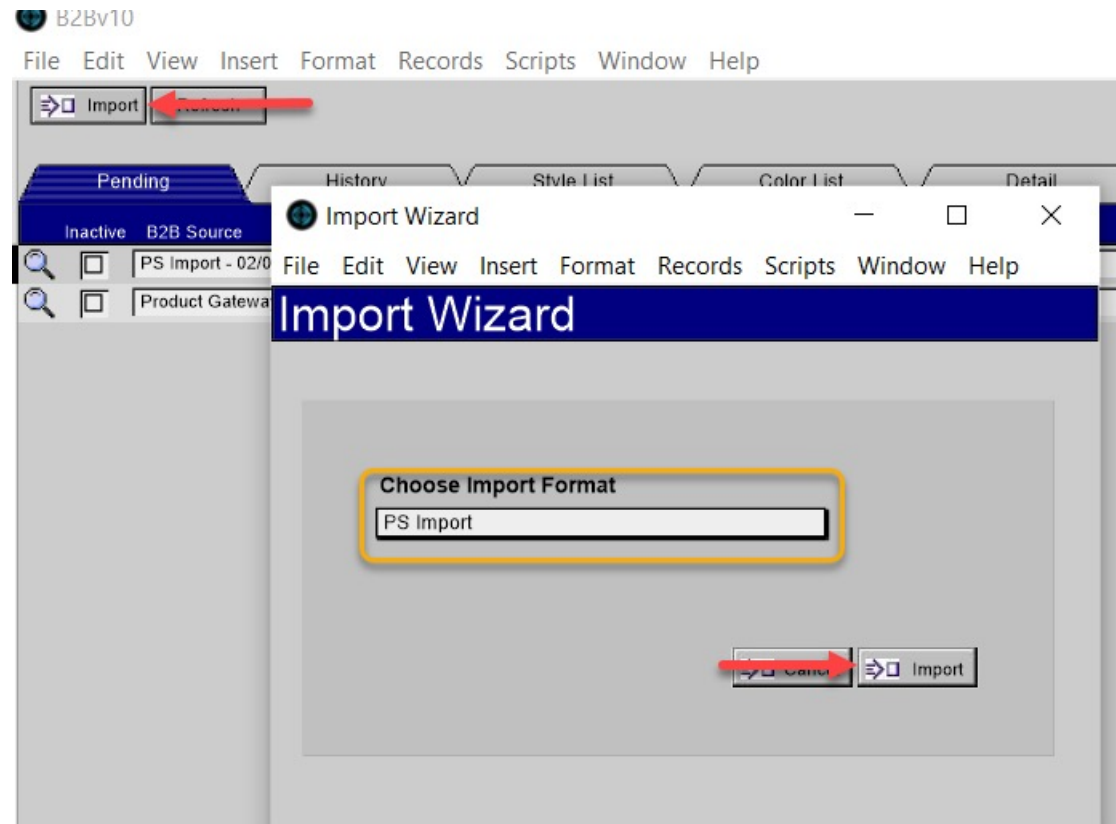
Clean up the spread sheet eliminating any Duplicate styles, fixing any mis-spellings, deleting any duplicate colors, etc.

# Product Catalog: Invigorate



Bring in the Fresh Catalog

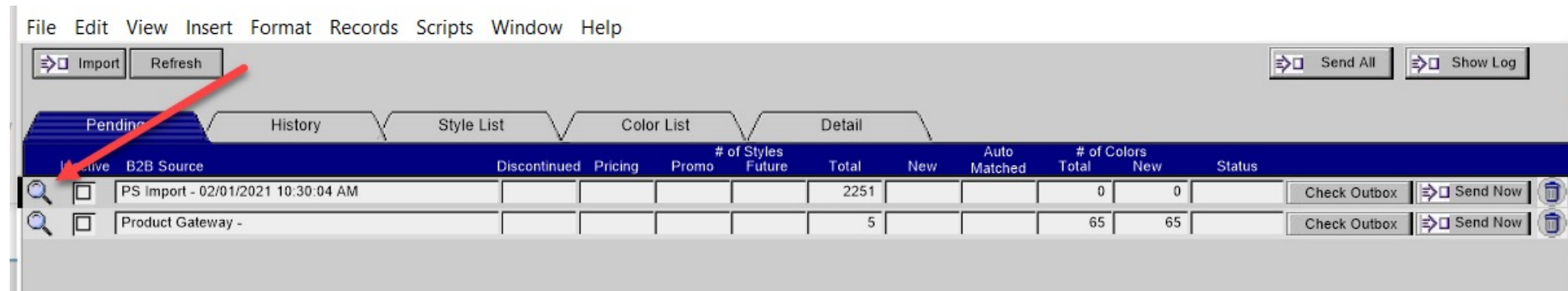
- Click on Admin
- Then B2B Product Catalog
- Click Import
- Then PS Import



# Product Catalog: Invigorate



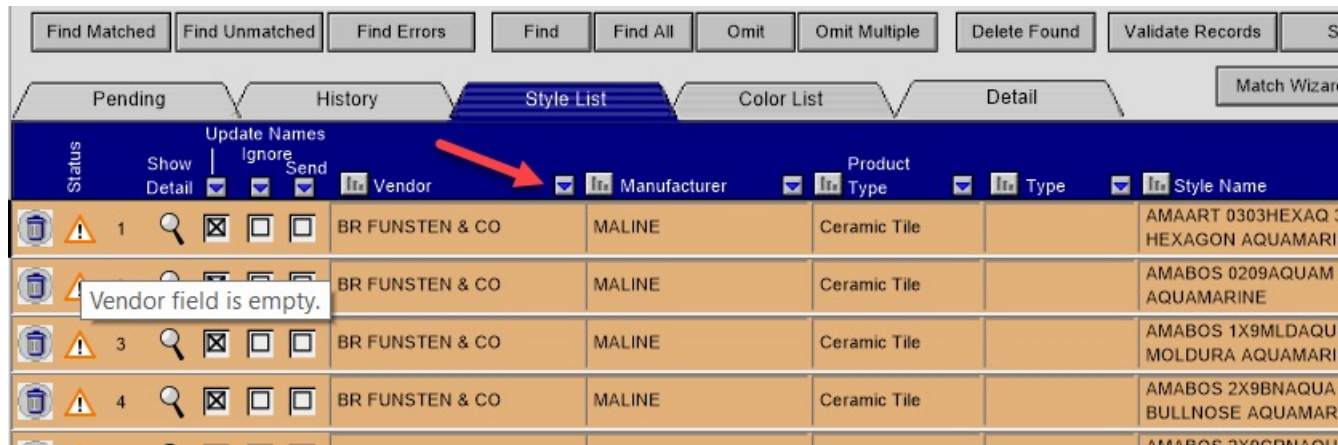
To view the import, click on the Magnifying glass



# Product Catalog: Invigorate



The lines will be Orange telling you, you need to Assign a Vendor from the drop down list

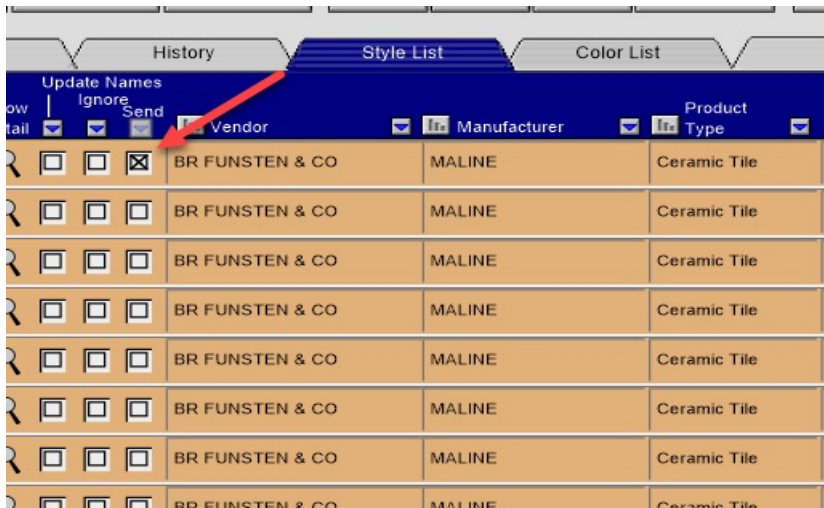


Once the vendor is selected Fill down using the little arrow on the right of the word vendor

# Product Catalog: Invigorate



- To send the file to the Catalog mark the Send box Fill down



- Then Click the Send to Products Button on the Top Right

